

Godrej interio®

Upgrade
to a user
friendly lab



NUCLEUS
Lab Furniture System



Our solutions

Godrej Interio, a division of Godrej & Boyce Manufacturing Co. Ltd., is India's largest manufacturer of home and office furniture. Among the many specialized industries that we service, we also design and manufacture furniture for labs, educational institutions, healthcare establishments, hospitals, shipyards and navy, auditoriums and stadiums.

Today, Godrej Interio Labs division is recognized for its focus on functionality, international standards of aesthetics and durable hassle-free product design and quality. It serves clients across different segments of industry, research centres, schools and universities, government agencies and healthcare establishments.

Nucleus: A personalised lab

With years of expertise in design, manufacturing and installation of Lab Furniture and engineering solutions, we understand that each lab comes with unique requirements.

Nucleus has been designed as an elemental, flexible Lab system that can cater to the needs of every lab. The modular D-frame based system coupled with contemporary design makes Nucleus a durable, efficient Lab system, the perfect starting point for your new lab plans.

That's why, when you plan your Lab with Nucleus, you can look forward to space optimised solutions, and achieve higher per lab capacity without compromising on usage and aesthetic aspects; and a lab partner for years to come.



PERFORMANCE



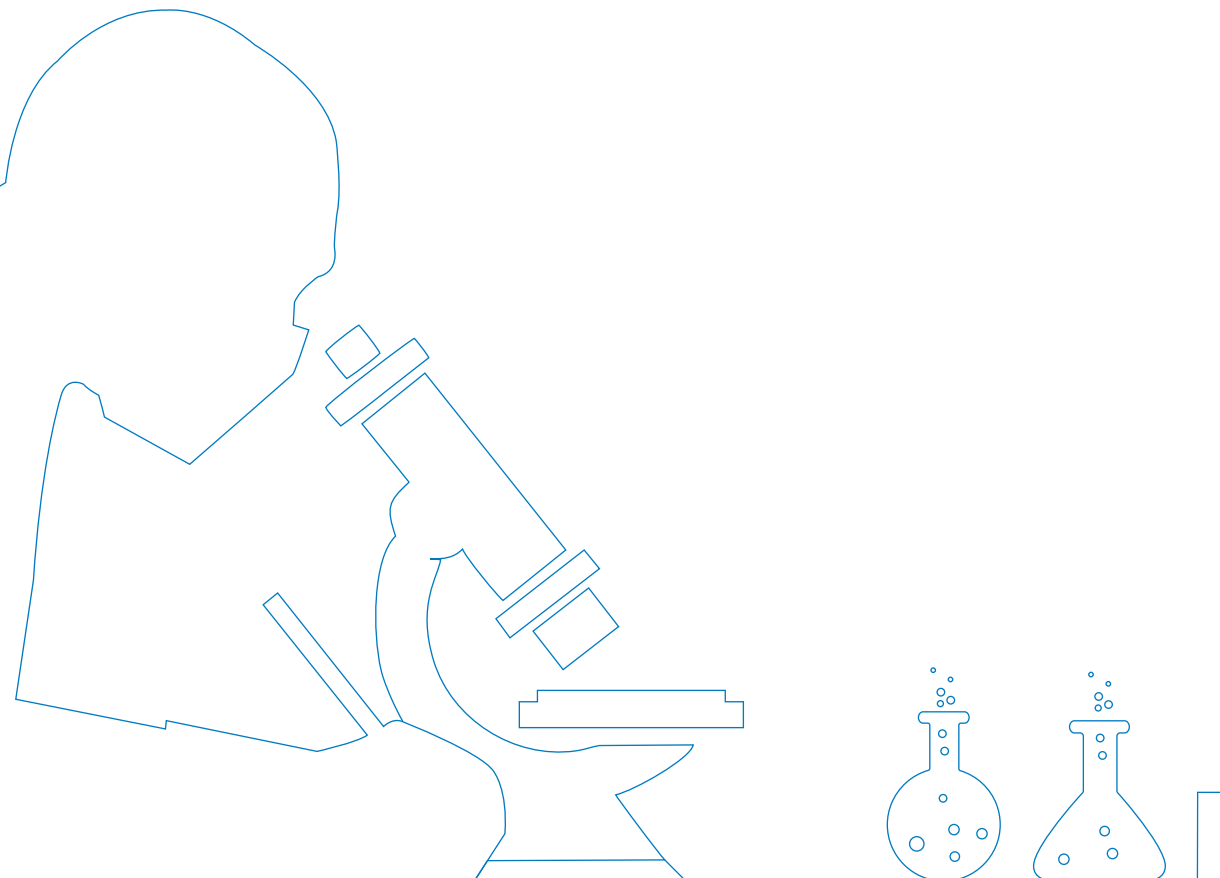
SAFETY



FLEXIBILITY



DURABILITY



Upgrade to an advanced and durable solution

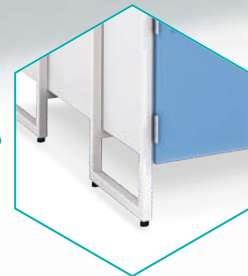
- MS based system, with pure epoxy coating coupled with the phosphating process provides very high chemical resistance
- Optimised footprint
- Fire resistant system
- SEFA compliant
- Safe for use across a wide range of Laboratory setups



OVERCLOSING SHUTTERS



HEIGHT ADJUSTABLE LEVELERS



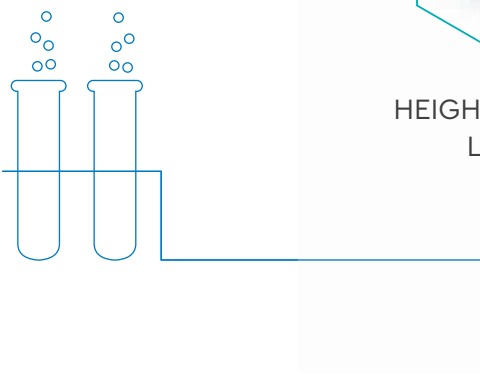
SLEEK AND STRONG LOOP LEG



RUST FREE SS HINGES



ERGONOMIC HANDLES



Diverse applications

Well fitted-out stations for seamless workflow



Island lab stations that can be accessed from either side



Lab workstations with individual storage



AVAILABLE IN OVER 600 LOCATIONS ACROSS INDIA
Put some play into your work by visiting
godrejinterio.com



An initiative by Godrej Interio, the first Indian furniture company with **GREENGUARD** certified products

MODULAR FURNITURE • DESKING • SEATING • STORAGE • INTERIORS • LAB • MARINE • HEALTHCARE • HOME

Local Address

National

North: Delhi, Chandigarh, NCR, Lucknow
South: Chennai, Bengaluru, Hyderabad, Kochi
West: Mumbai, Ahmedabad, Bhopal, Pune
East: Kolkata, Bhubaneswar, Guwahati, Patna

In keeping with the Godrej policy of continuous development and improvement, the design, dimension and specification may be updated without prior notice or obligations. Form, Colour and Finish of product in this document are representative of design intent and may vary from actual. Colour options depicted in this catalogue are as close to what modern printing processes allow. All dimensions are in 'cm' and are subject to commercial tolerance. Our products are meant for indoor use only.

Godrej & Boyce Mfg. Co. Ltd.

Godrej Interio, Pirojshanagar, Vikhroli (W), Mumbai – 400 079.
Toll Free Number: 1800-267-1122. Fax: +91-22-6796 1503
Email: interiorlab@godrej.com
Website: www.godrejinterio.com

Follow us on

